

KINOTONE FP-16 PROFESSIONAL THEATRE AND AUDITORIUM 16MM MOTION PICTURE PROJECTOR

The **KINOTONE FP-16** Professional 16mm Sound-Film Projector is designed for permanent installations, such as in screening rooms, school auditoriums and small theatres. This modern projector is simple to operate and easy to maintain.

The FP-16 projector is a sturdy, well built machine, precision engineered for long life and superior reliability. It is designed with a unique "grooved disc" intermittent mechanism and 12 tooth sprocket. The use of large feed, holdback and intermittent sprockets, always engaging at least five perforations, enables this projector to reduce print wear and show damaged prints that cannot be run on other projectors.

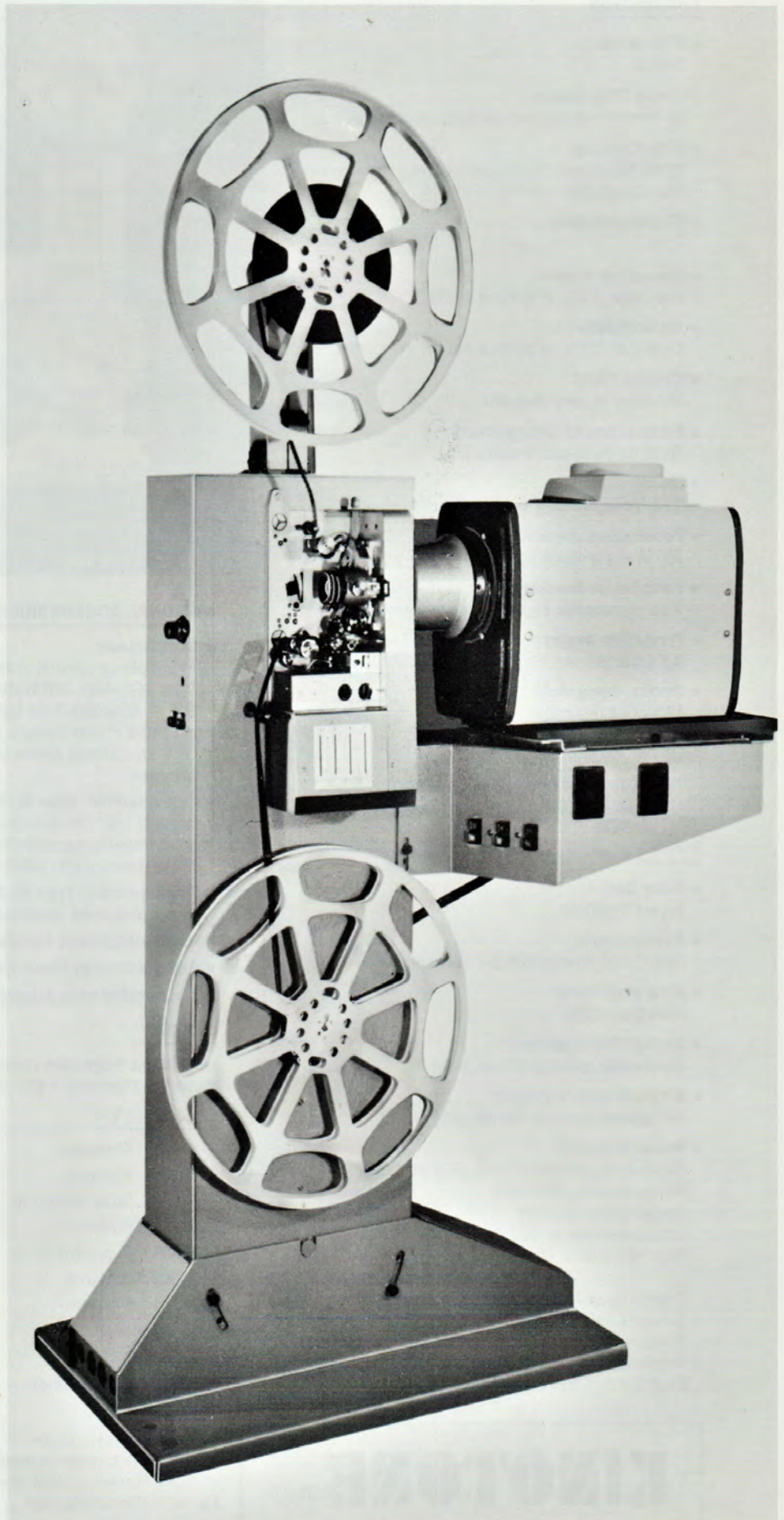
The left-hand operation of this projector has several advantages particularly in regard to print protection and sound reproduction. The profiled rollers, runner plate, pressure plate and sound drum preclude scratching either the sound track or the picture area, regardless of the emulsion position.

The sound optics and magnetic heads are all positioned toward the operating side and are easily accessible for cleaning and service adjustments when required.

The plug-in, solid state amplifiers feature an optimum frequency response curve. The sound head has low flutter and wow because of the rotary sound drum and pressure roller; the same construction is used in this projector as in the Kinotone 35mm and 70/35mm professional projectors. There are vertical sliding potentiometers for microphone volume, film sound volume, bass and treble control.

Shown with ORC Model 1000-16 Xenon Lamphouse* (optional) which provides 4000 lumens with open aperture and f/1.6 lens. Features integral power supply. Equipped with 10' power cord for connection to standard 115V, 60Hz, 15A wall outlet. Requires no exhaust vent. Has current regulator, adjustment control and elapsed time meter. Hi-intensity, ozone-free projection lamp conforms to latest safety standards. Also available: Models 1600-16 (1600 Watt) and 2500-16 (2500 Watt) lamphouses with external power supplies.

*Optical Radiation Corporation



KINOTONE FP-16 PROFESSIONAL THEATRE AND AUDITORIUM 16MM MOTION PICTURE PROJECTOR

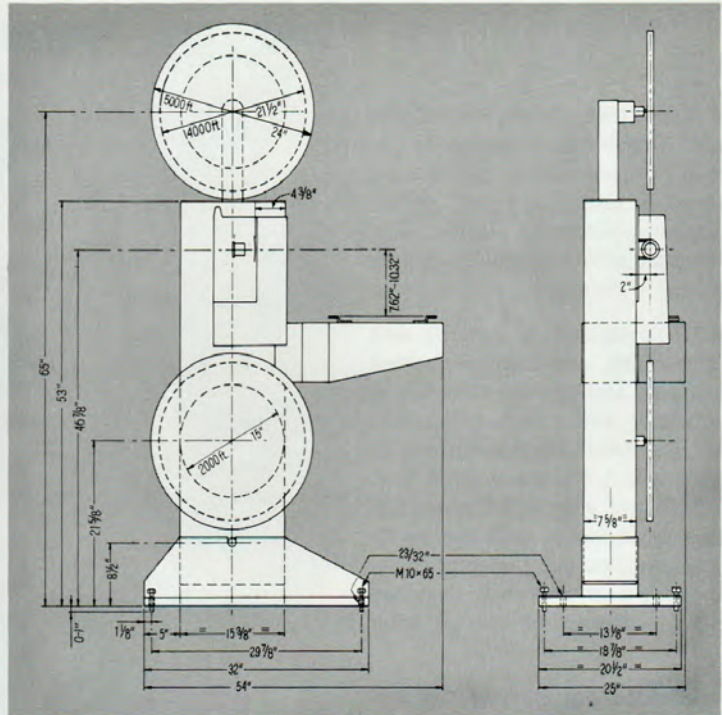
GENERAL SPECIFICATIONS

PROJECTION

- **Film Width:**
16mm
- **Linear Film Speed:**
24 frames per second (36 feet per minute)
- **Film Capacity:**
5,000 feet (over 2 hrs. continuous programming)
Reel Shaft Diameter: $\frac{5}{16}$ "
- **Shutter Efficiency:**
72%
- **Horizontal Weave:**
Less than 0.2% of picture width
- **Vertical Jitter:**
Less than 0.2% of picture height
- **Control Panel:**
Mounted in lamp bracket
- **Picture/Sound Changeovers:**
Built-in, push-pull theatre type
- **Motor**
120 Volts, 60Hz, 1 phase, Synchronous
- **Power Consumption:**
200 Watts without light source
- **Lamphouse Bracket:**
Accommodates any standard Xenon lamphouse
- **Projection Angle:**
Adjustable from +15° upward to 25° downward
- **Optical Centerline:**
47 inches minimum, Adjustable
- **Aperture Plates:**
Supplied (one each)
Flat: 9.3mm x 6.9mm (.366" x .272")
Undersized: 7.5mm x 5.0mm (.295" x .197")

SOUND

- **Solar Cell:**
Type C1 420 98
- **Exciter Lamp:**
7210C, 6V, 1 Amp with pre-focused base
- **Wow and Flutter:**
Less than 0.2%
- **Optical Pre-Amplifier:**
Solid-state, printed circuit, plug-in
- **Magnetic Pre-Amplifier:**
Solid-state, printed circuit, plug-in
- **Power Amplifier:**
Solid-state, printed circuit, plug-in
Power Output: 20 Watts
Output Voltage: 100V
Load Impedance: 500 Ohms
Hum and Noise: Optical sound: better than -60db
Magnetic sound: better than -45db
Distortion at 1000Hz: less than 1%
Exciter Lamp Supply: 6VDC, 1 Amp
Frequency Response: Flat from 40 to 7000Hz
Treble Control Range: -14 to +14db at 10,000Hz
Bass Control Range: -14 to +14db at 40Hz



Net weight: 250 lbs., Shipping weight: 500 lbs.

OPTIONAL ACCESSORIES

- **Lamphouses:**
Available on special order with integral Philips Type LCB4500, 500 Watt Xenon lamphouse with G.E. # XE500EAR/46 bulb and Kneisley R-2180-3 Power Supply. Also available with ORC and Strong Xenon lamphouses and power supplies.
- **Line Amplifier, Type EL 5490/00:**
Output: 1.9V into 600 Ohms (8dbm)
Load Impedance: 600 Ohms
Distortion at 1.9V, 1000Hz: less than 0.8%
- **Film Rewinder, Type EL 5008/02:**
Bench-mounted, noiseless—4000' capacity
- **Reels—4000 feet, Aluminum, Type EL 5012/00**
- **Remote Control Focus Kit, Type 8993 420 94001**
- **Anamorphic Lens Adapter, Type EL 5162/11**

LENSES

Isco 16mm Projection Lenses Mounting Diameter 1.673" (42.5mm)

CAT. NO.	TYPE	EFmm	EF"	f/
0161425	Kiptaron	25	.984	1.4
0161335	Kiptaron	35	1.378	1.3
0161945	Super Kiptar M	45	1.772	1.9
0161350	Kiptaron	50	1.969	1.3
0161955	Super Kiptar M	55	2.165	1.9
0161665	Kiptaron	65	2.559	1.6
0161775	Kiptaron	75	2.953	1.7
0162090	Kiptaron	90	3.543	2.0
0162100	Kiptaron	100	3.937	2.0
0160020	Iscomorphot	25-65	.984-2.559	--

KINOTONE INC.

Kinotone Inc. reserves the right to make changes in design, construction and specifications, details of which do not appear in this catalog issue.