

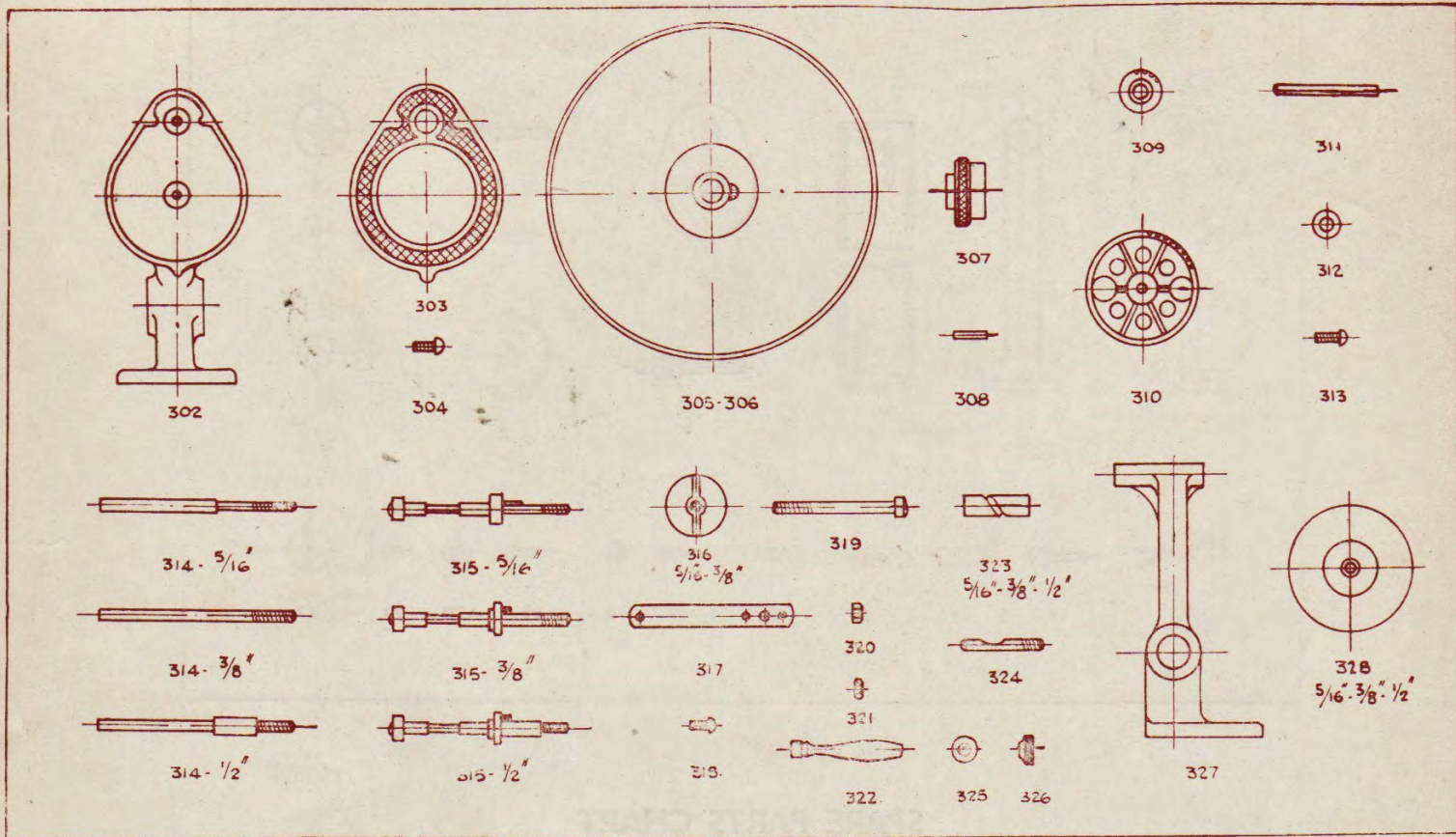


SPARES LIST

35 mm. REWINDER

No. 3 MODEL

(BAR MODEL OR BASEBOARD MODEL)



SPARE PARTS CHART

Part No.	Description	Part No.	Description
301	Chromium plated bar or baseboard (as required)	315a	Tension spring
302	Main casting for geared end	315b	Steel collar
303	Gear cover	315c	Adjusting nut
304	Screws for gear cover	316	Clamp nut
305	15" diam. stripping disc	317	Handle crank
306	Screw for stripping disc	318	Screw for handle crank
307	Cup casting	319	Handle spindle
308	Pin for cup casting	320	Nut for handle spindle
309	Small gear	321	Lock nut for ditto
310	Large gear	322	Handle grip
311	Spindle for large gear	323	Brass sliding tube
312	Washer for large gear spindle	324	Clamping screw for bar
313	Screw for large gear spindle	325	Washer for ditto
314	Spindle for small gear	326	Nut for ditto
315	Auxiliary end spindle (all models now supplied with snick ends and adjustable spring tension comprising parts 315a/b/c)	327	Main idle end casting
		328	Auxiliary cheek

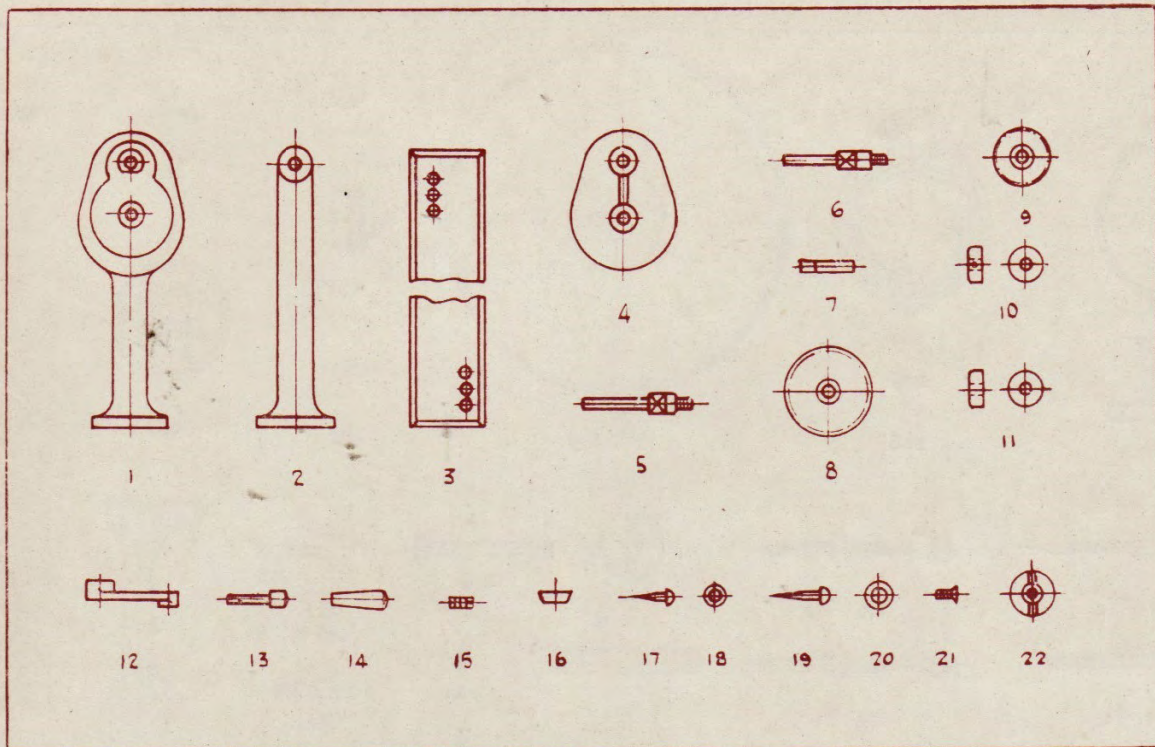
MOST IMPORTANT

When ordering, please state whether spindles are $\frac{5}{16}$ ", 9 mm., $\frac{3}{8}$ " or $\frac{1}{2}$ "



PREMIER 16 mm. REWINDER

(FIRST SERIES)



SPARE PARTS CHART

Part No.	Description	Part No.	Description
1	Geared end casting	13	Handle spindle
2	Idle end casting	14	Handle
3	Baseboard	15	Handle casting grub screw
4	Gear cover	16	Rubber foot
5	Geared end spool spindle	17	Screw for ditto
6	Idle end spool spindle	18	Washer for ditto
7	Large gear spindle	19	Screw for baseboard
8	Large gear	20	Washer for ditto
9	Small gear	21	Cover casting screw
10	Fixed collar	22	Clamp nut
11	Loose collar	23	Spool retaining spring
12	Handle casting		

(Wherever possible, state serial number of rewinder when ordering)